



Bathing establishment Fact Sheet

Name of bathing establishment	CORALLO
Address	Traversa a Mare, 30
City	Viareggio (LU)
Contacts	Tel +39 0584319999 bagnocoralloviareggio@gmail.com
Website	Not detected

TESTED BY: [Handy Superabile - Social Promotion Association](#) in summer 2023

Please note The following information refers to the verification date shown at the bottom of each sheet. The Association is not responsible for any significant changes made to the property after the visit.

Summary

Bathing establishment fact Sheet	1
Arrival at the facility.....	2
Private/public parking.....	2
Patway from the parking lot to the main entrance	2
Reception welcome.....	3
Bar/restaurant.....	4
Internal pathways and common services	5
Internal pathways.....	5
Toilet and shower accessible to guests with reduced mobility	6
Changing room	7
Beach.....	8
Children's play area	10
Pool.....	10
Medical practices/health facilities.....	12

Project carried out with the contribution of





Arrival at the facility

Private/public parking

Presence of private parking	NO
Public parking nearby	YES about 50/100 meters away
Presence of parking space reserved for people with disabilities	YES
Type of parking lot	ASPHALT
	

Pathway from the parking lot to the main entrance

Pathway from the parking lot to the entrance	Via a short connecting ramp
There are indicators and tactile maps	NO
Useful width of door/entrance passage	greater than 90 cm





Reception welcome

Umbrella booking system	<input type="checkbox"/> Via the web <input checked="" type="checkbox"/> Via telephone <input checked="" type="checkbox"/> On site
Presence of multilingual staff	not detected
Presence of plant plan with legend of services available	NO
Presence of visuo-tactile map	NO
Noticeboard/information panels at an average height of 130 cm in a well-lit area and a character size of at least 14 dpi with a contrast ratio greater than 4.5:1	NO
The staff has undergone training on welcoming people with various disabilities	NO





Bar/restaurant

Type of venue	Bar/restaurant
Access to the venue	From the entrance via ramp length 250 cm, width 90 cm, slope 7% while from the beach via ramp length 150 cm, width 90 cm, slope 10%
Useful width of door/entrance passage	greater than 90 cm
Bar counter	height greater than 100 cm
Type of tables	4 legged
Space under the floor tables	63 cm
Multilingual menu	not detected
Menu with large print characters	NO
Braille menu	NO
Table service for people with disabilities	YES
Availability of food for celiacs	<input type="checkbox"/> bread <input type="checkbox"/> pasta <input type="checkbox"/> cookies <input type="checkbox"/> ice creams <input type="checkbox"/> pre-packaged foods





Internal pathways and common services

Internal pathways

Indicate whether the pathways connecting the entrance to the beach are flat or with ramps in addition to those already described

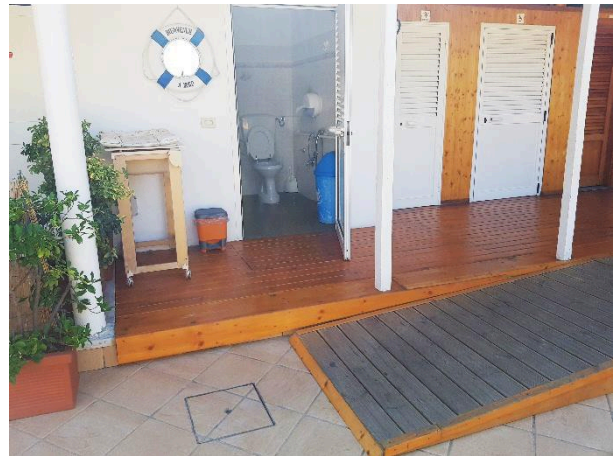
obstacle-free pathways





Toilet and shower accessible to guests with reduced mobility

Number of toilets accessible/usable by guests with reduced mobility	1
Access to the venue	via ramp length 250 cm, width 90 cm, slope 7%
Useful width of entrance door	90cm
Toilet height	50cm
Open front toilet seat	YES
Support handles	on both sides of the toilet
Flexible shower next to the toilet	YES
Free space on the sides of the toilet	to the left 31cm To the right greater than 90 cm Front greater than 90 cm
Electric bell/telephone	NO
Washbasin with space underneath for a wheelchair	69cm
Height from the ground to the lower edge of the mirror	sufficient for use by a person in a wheelchair
Baby changing table	not detected





<p>Shower accessible to guests with reduced mobility available</p>	<p>Yes, shared with the toilet room</p>
<p>Shower type</p>	<p>open type</p>
<p>Floor-level shower</p>	<p>YES</p>
<p>Shower chair</p>	<p>foldable on the wall</p>
<p>Support handle</p>	<p>YES</p>
<p>Presence of shower head or latch</p>	<p>ups and downs</p>
<p>Electric bell/telephone</p>	<p>YES</p>





Changing room

Changing room accessible to guests with reduced mobility available	YES
Access to the venue	via the same ramp that leads to the toilet room
Useful width of door/entrance passage	greater than 90 cm
Dimensions of the changing room	width 140 cm and depth 116 cm
Presence of cot	NO
Coat stand height from the floor	180cm

Beach

Type of beach	sand
Access to the beach	via ramp length 150 cm, width 90 cm slope 10%
Walkway to reach the umbrellas	YES
Type of walkway	made of PVC
Walkway width	90cm





<p>Removable Platform between the walkway and the umbrella station to facilitate the passage and parking wheelchair</p>	<p>YES</p>
<p>Amphibious beach chair available for helping people with reduced mobility to enjoy swimming (owned by the establishment or by association)</p>	<p>YES</p>





Children's play area

Children's play area	inaccessible to children with reduced mobility due to the sandy bottom
There are games for children with reduced mobility	NO
	Play area on sandy bottom

Pool

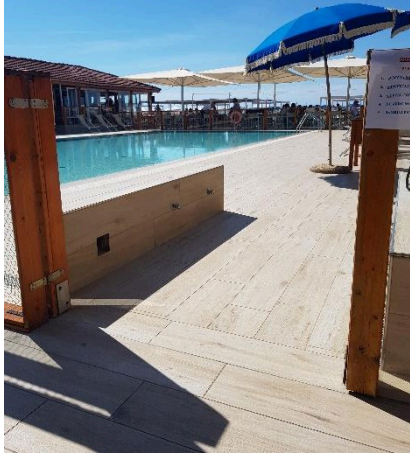
The property has a swimming pool	YES
Access to the swimming pool	flat
Useful width of entrance gate	greater than 90 cm
Access to the tub	with ladder
Bathing aids for guests with reduced mobility	not present



Project promoted by



Regione Toscana



Floor-level outdoor showers

Project carried out with the contribution of



**Presidenza del
Consiglio dei Ministri**
Ministro per la disabilità

1

Project promoted by



Regione Toscana

Medical practices/health facilities

Hospitals near the facility	Versilia Hospital SS 1, 335, 55049 Camaione LU Telephone: 0584 6051
Other healthcare facilities	ASL Health District No. 12 Viareggio Place Buon Consiglio Viareggio Tel. 0584.6056353 Dialysis service in Pisa at CISANELLO HOSPITAL Dialysis therapy department (hemodialysis – peritoneal dialysis) in the period June - September Holiday Dialysis Service with availability of n. 6 beds tel. 050 997250 – 997253 – 997256

TESTED BY: Handy Superabile - Social Promotion Association - in summer 2023

Project carried out with the contribution of



**Presidenza del
Consiglio dei Ministri**
Ministro per la disabilità